

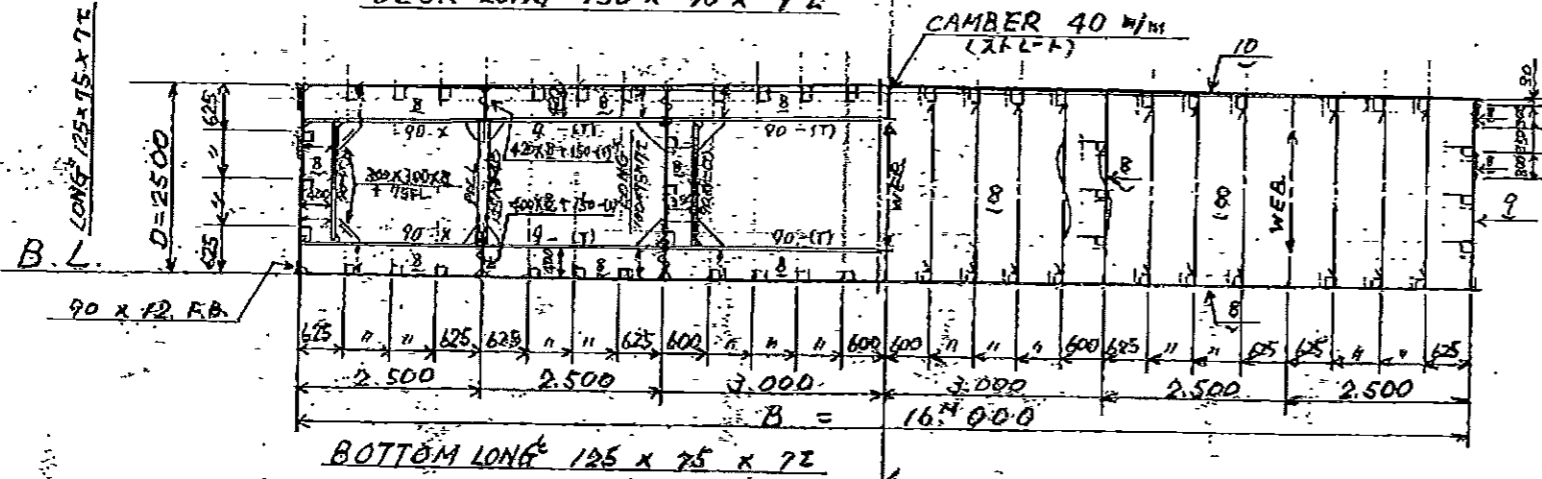
SECTION

$S = 1/100$

DECK LONG<sup>s</sup> 150 x 90 x 9 Z

WEB STIFF 350 x 8 + 90 x 9 - (17)  
ORI. " 100 x 75 x 7 Z

CAMBER 40 W/M  
(2.5'-1')



PRINCIPAL DIMENSION

LENGTH (O.A.)	40.000
BREADTH (M <sup>LO</sup> )	16.000
DEPTH (")	2.500
CAMBER	0.40

MD-1002(1003)

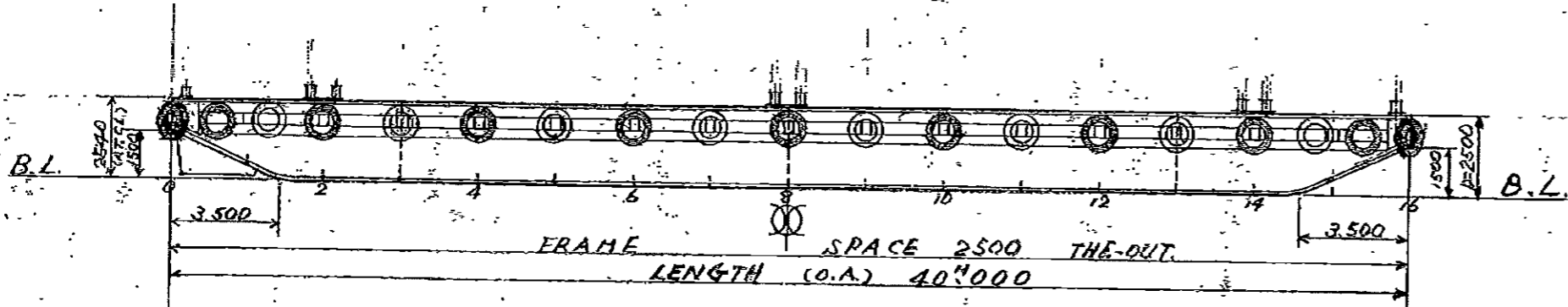
1000<sup>積</sup>

40<sup>M</sup>型ホツン台船

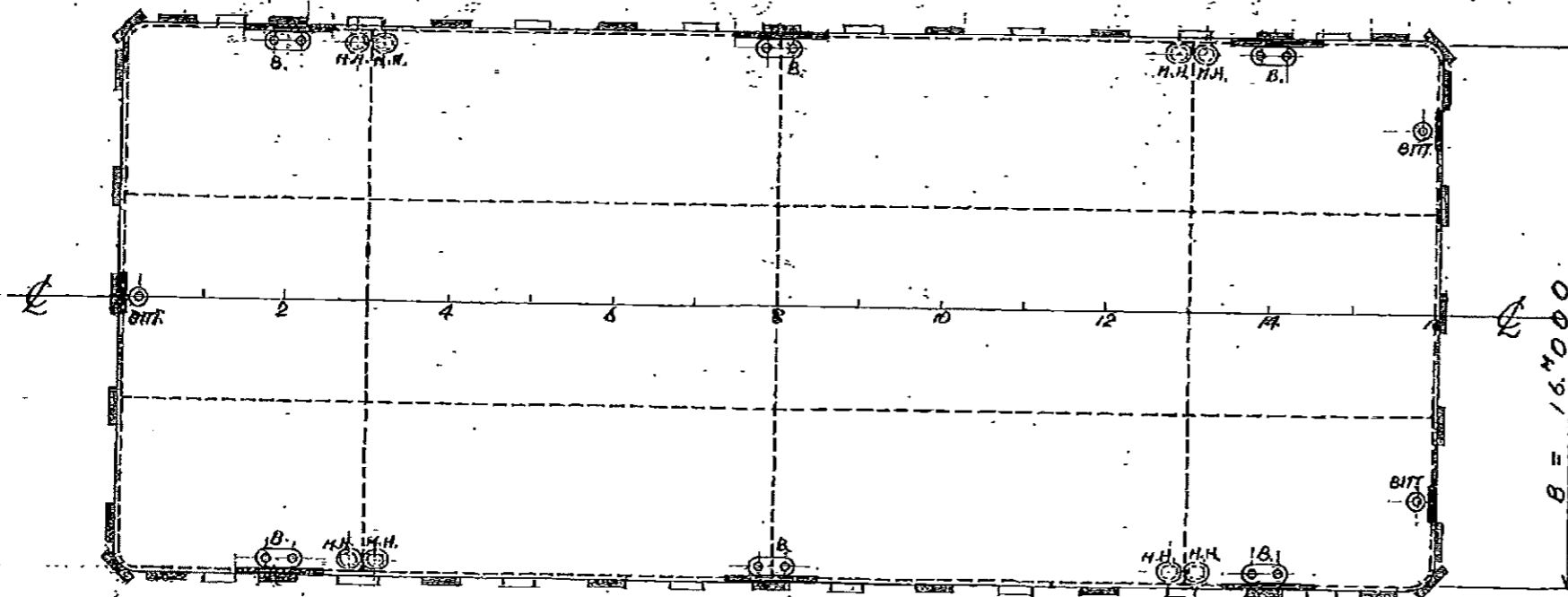
MD-1005 (MD309)  
MD-1006

一般配置図

PROFILE



UPPER DECK PLAN



尺度 1/200

兵庫県明石市港町16-6

宗田造船株式会社

電話(明石)317-3840

審査 設計 写図

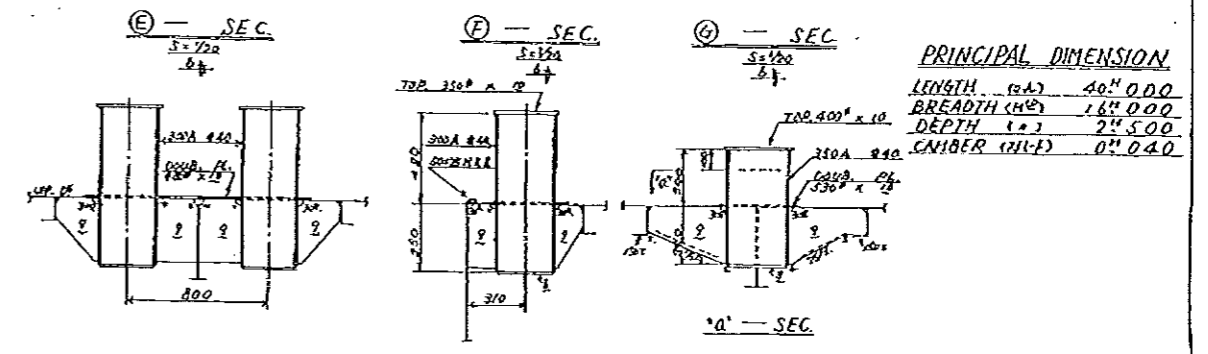
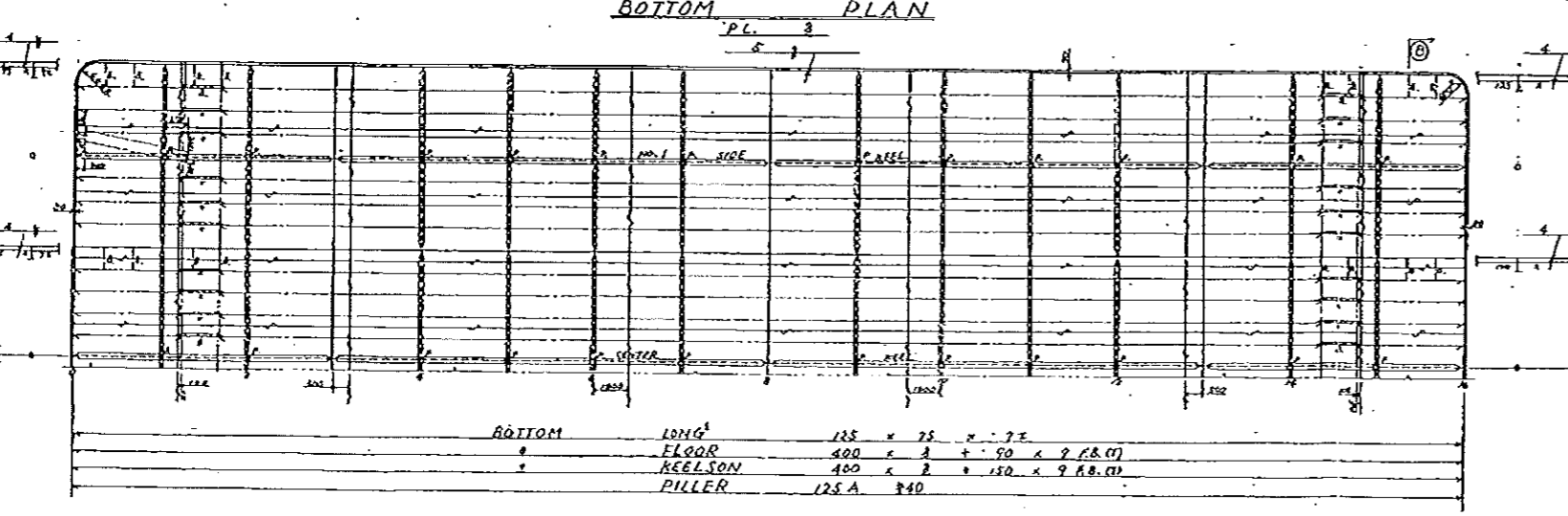
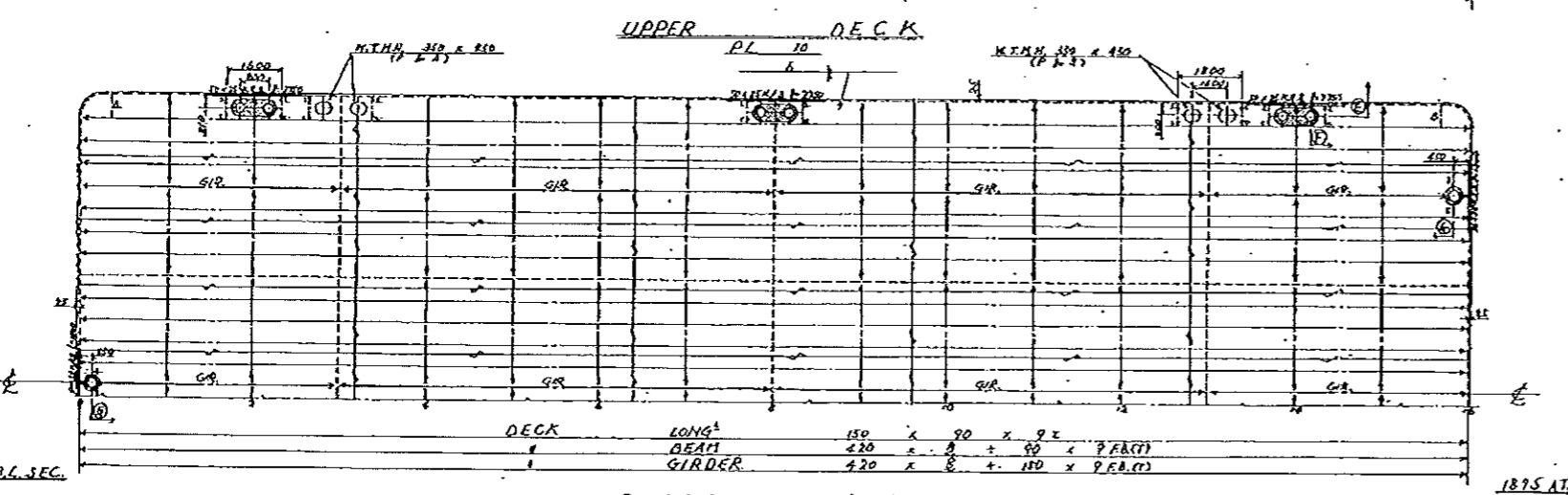
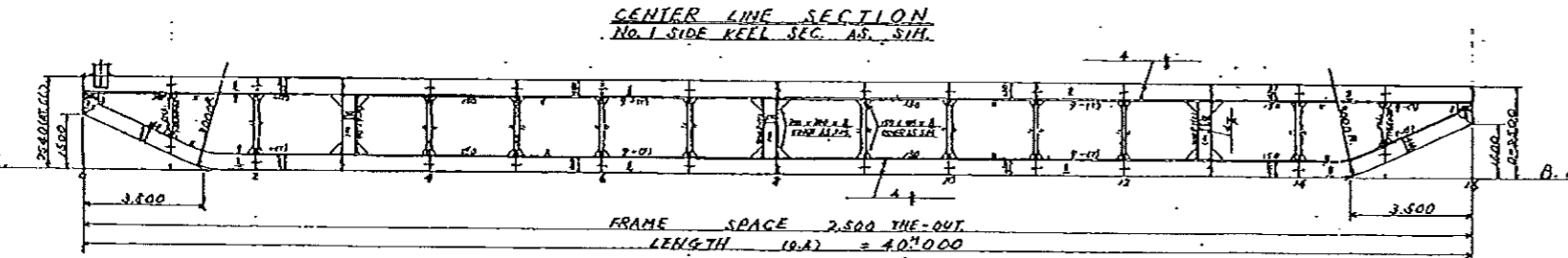
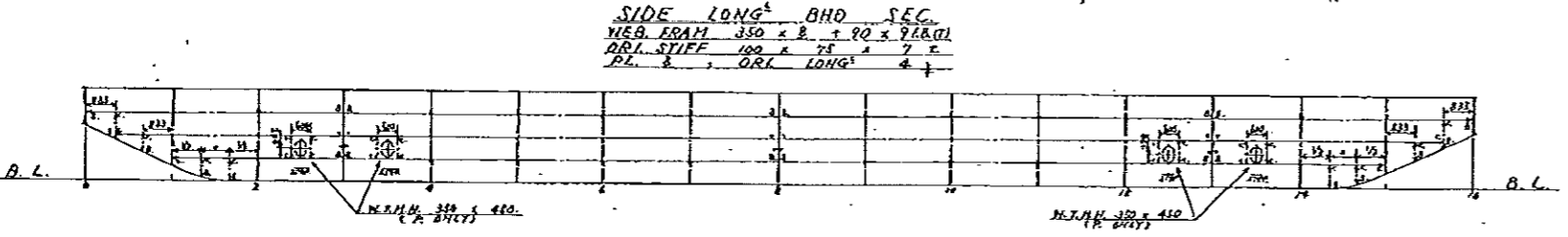
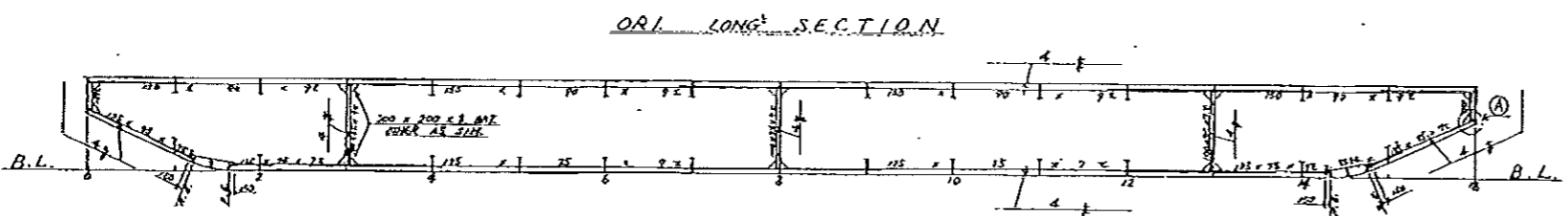
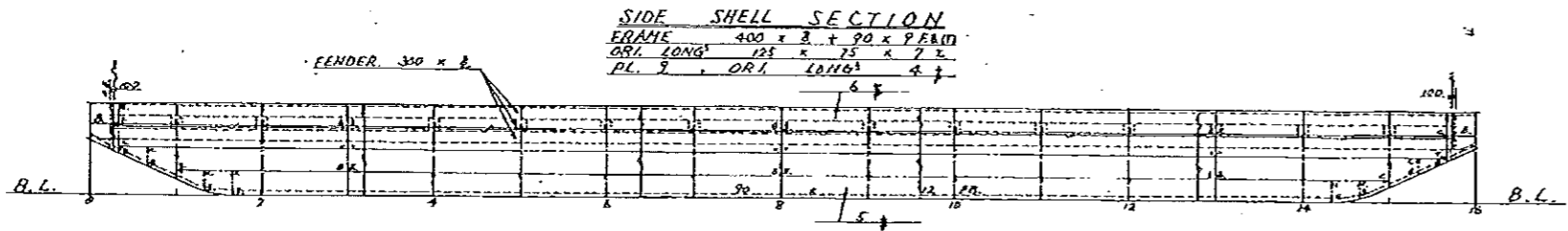
岐部

製図年月日 平成9年5月8日

番 船

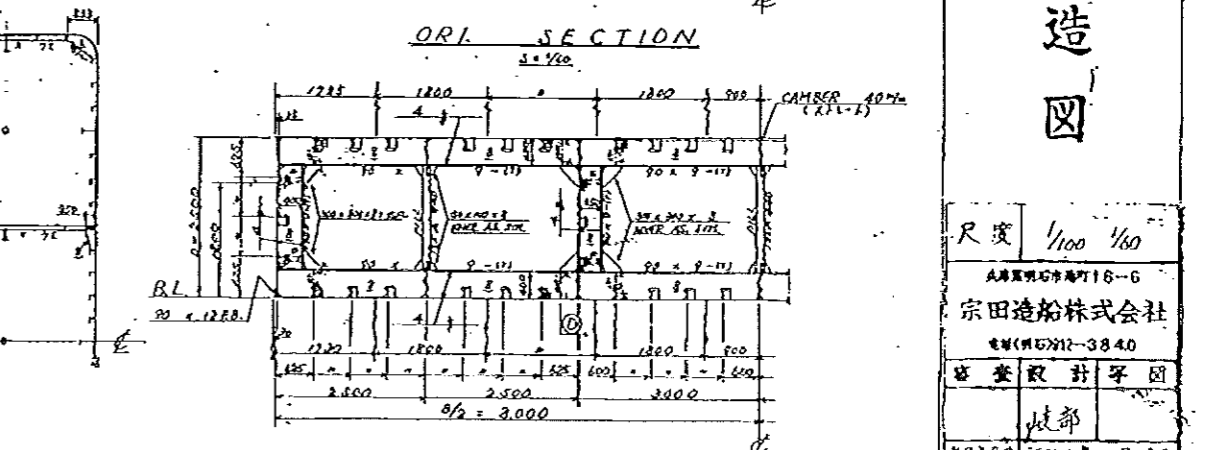
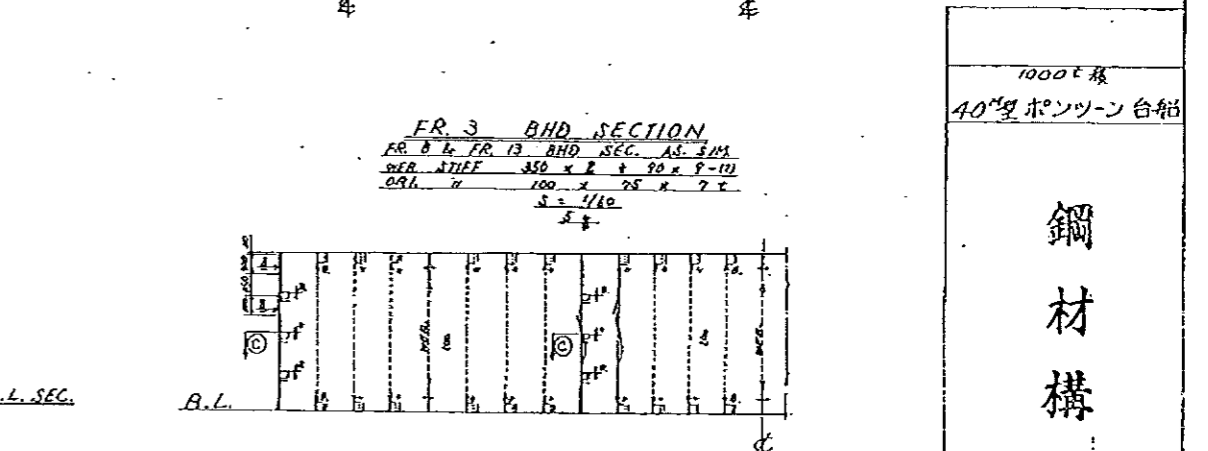
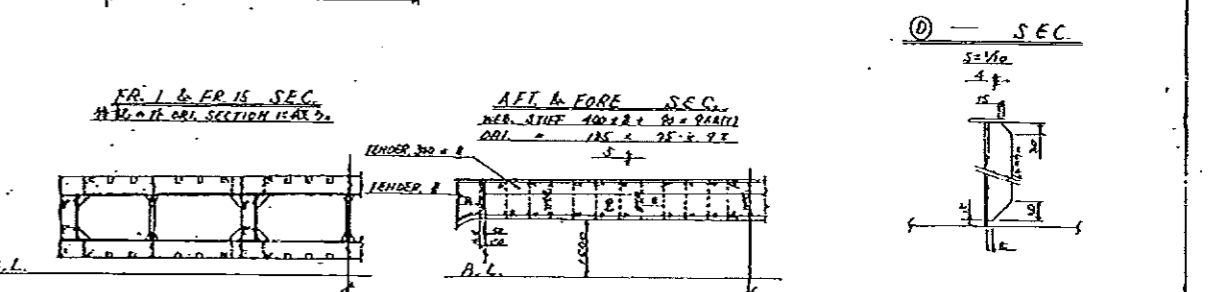
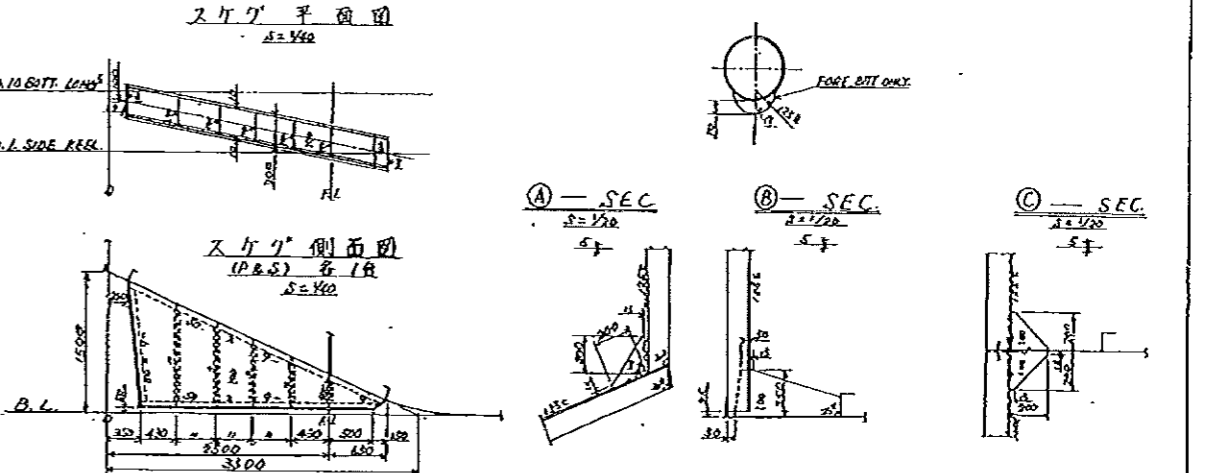
図面番号

MD 1005



**PRINCIPAL DIMENSION**

LENGTH (P.A.)	40.000
BREADTH (M.S.)	16.000
DEPTH (A.S.)	2.500
CAMBER (M.F.)	0.240



1000 噸  
 40 噸 ポンツン 台船

**鋼材構造図**

尺度 1/100 1/50

宗田造船株式会社  
 電話 (東京) 3840

設計者 枝部  
 年月日 昭和 4 年 5 月 3 日  
 図 119

静丸海運株式会社